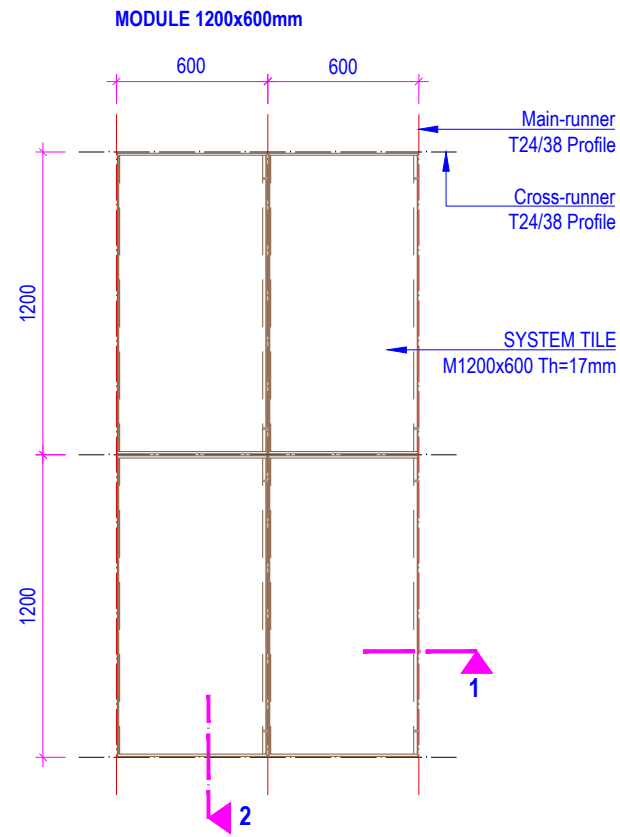
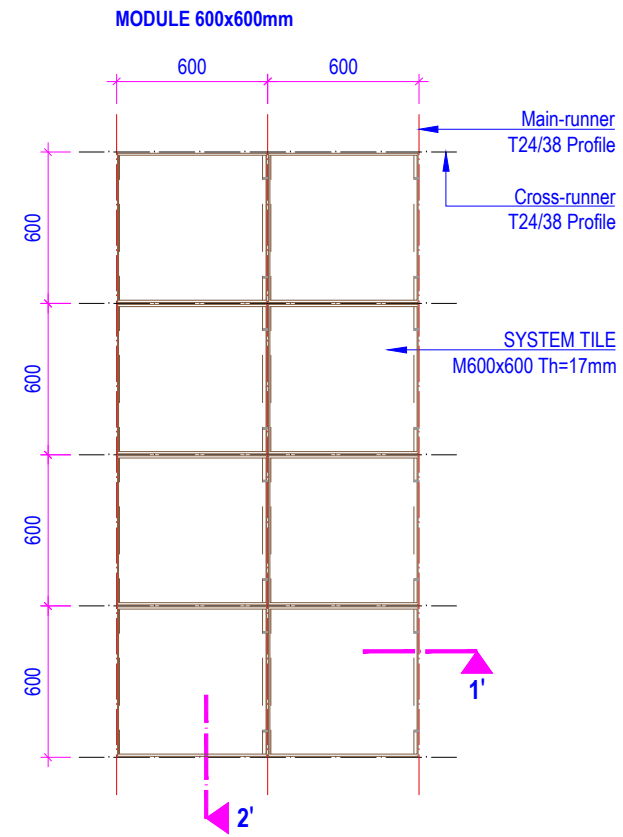


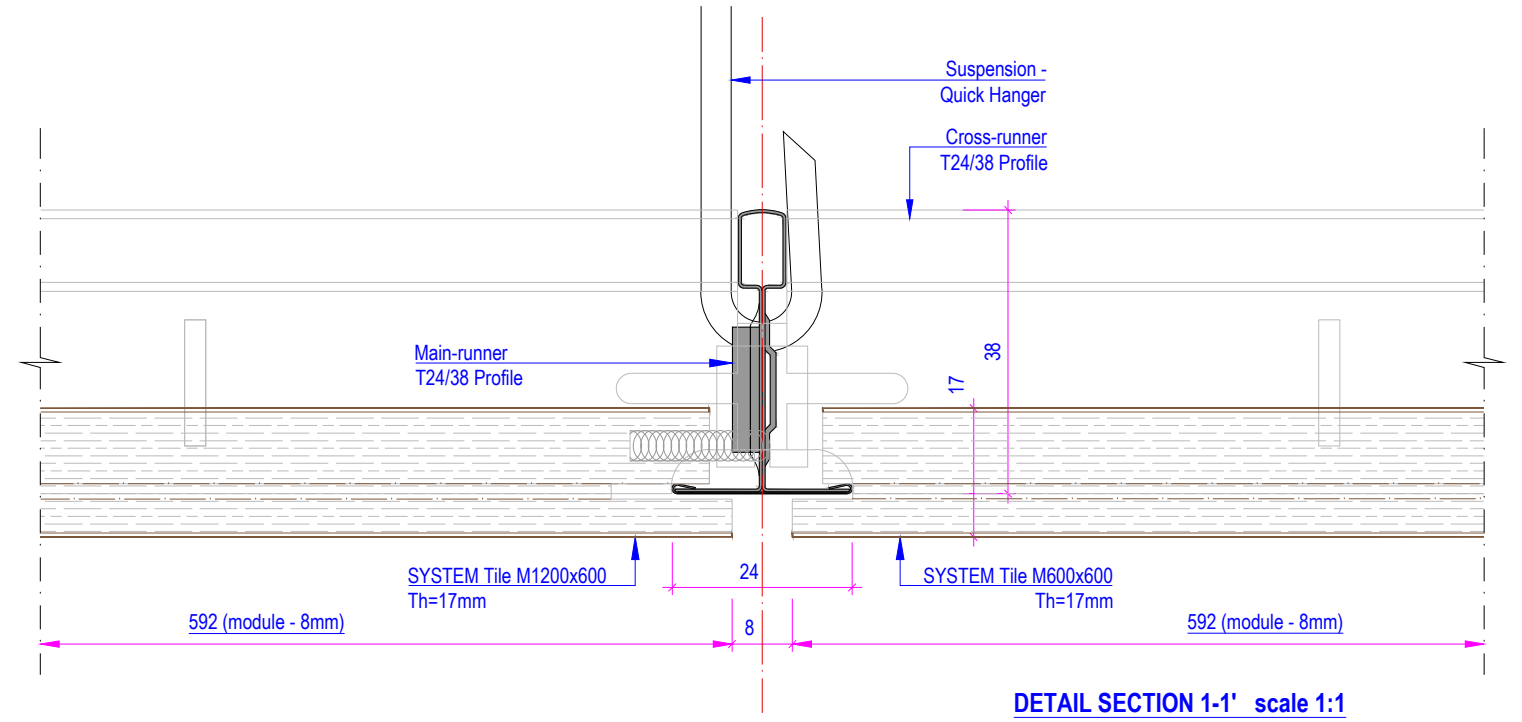
SYSTEM TILE



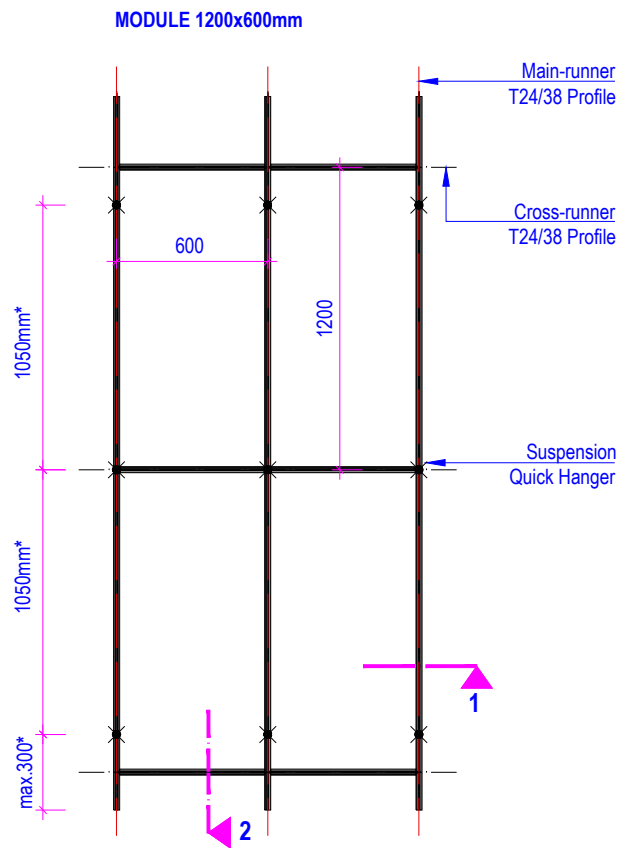
TILE LAY-OUT scale 1:30



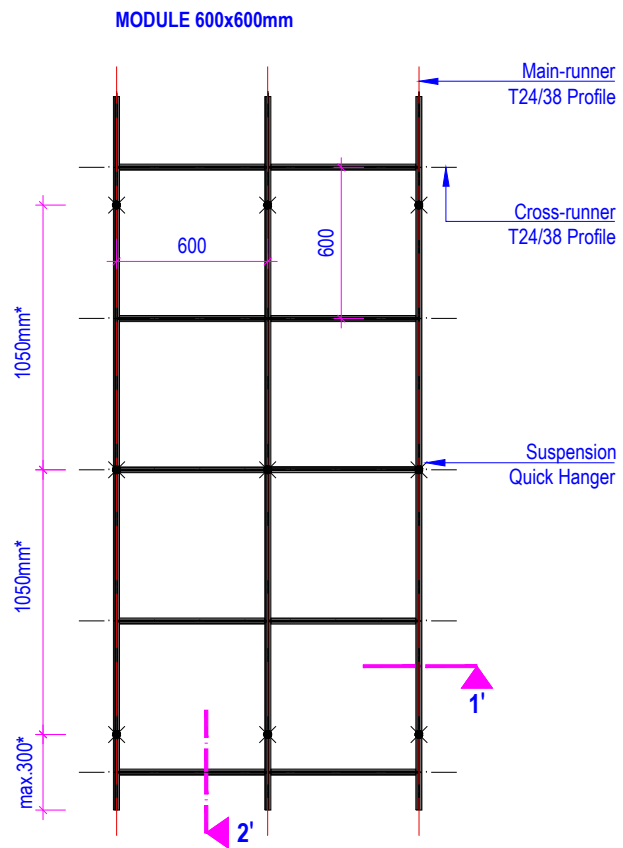
TILE LAY-OUT scale 1:30



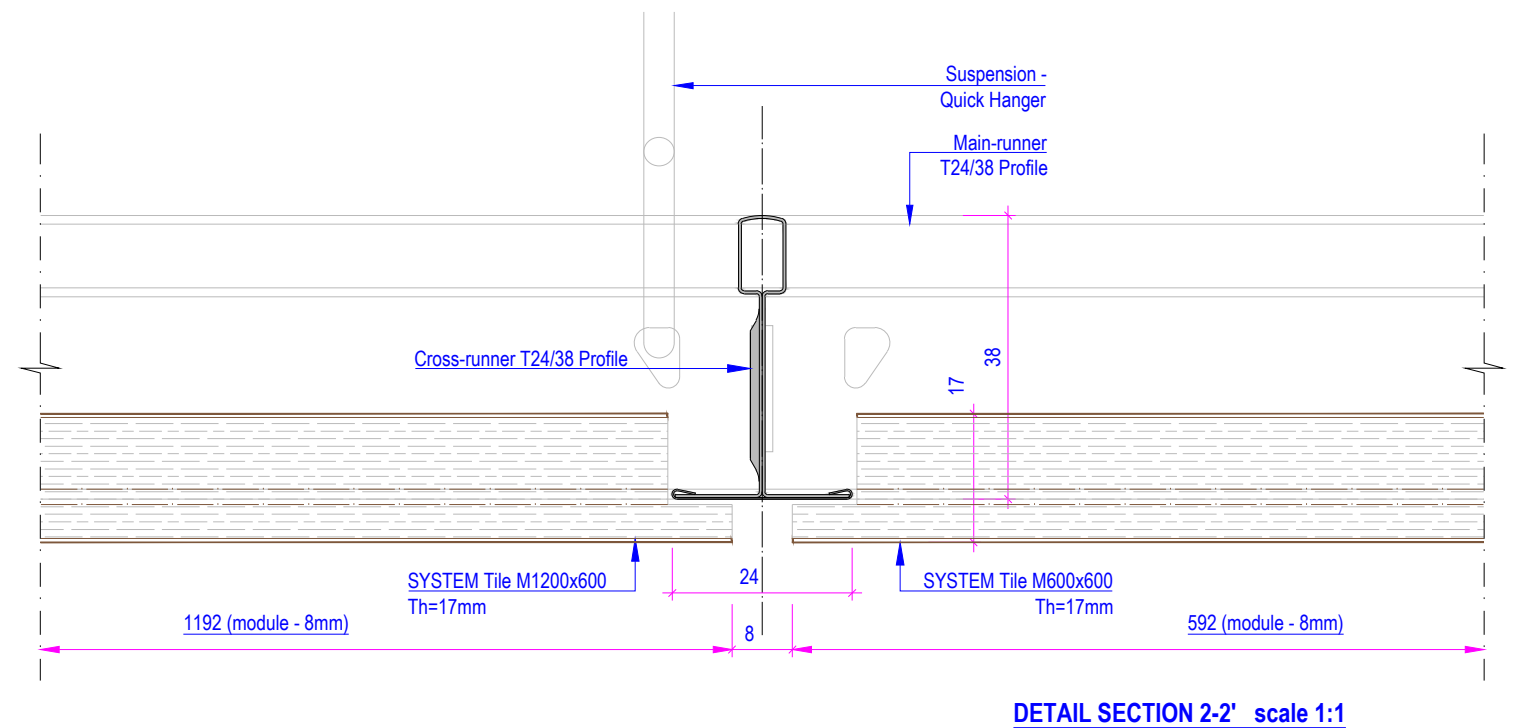
DETAIL SECTION 1-1' scale 1:1



STRUCTURE LAY-OUT scale 1:30



STRUCTURE LAY-OUT scale 1:30



DETAIL SECTION 2-2' scale 1:1

NOTE: max.300* / max.1050mm* - Maximum length of carrier cantilever and carrier span are specified in CEILING SUSPENSION INFORMATION



Drwg.No. C-i-VW-TI-SY-T24 -2D_2017_Application	Date: 01-07-2017	Scale: 1:1,1:30
	Size: A3	Rev: REV.NO.
Subject: Interior Veneered Wood Tiles Ceiling		